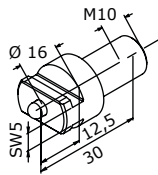
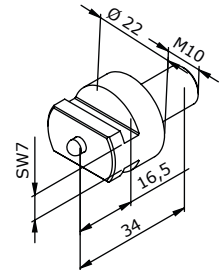


Schnellkupplung
Fast coupling

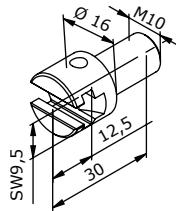


Größe / Size	Art. Nr. / Article no.
1	AR-1000032

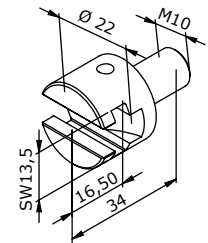


Größe / Size	Art. Nr. / Article no.
2	AR-1000033

Schnellkupplung
Fast coupling



Größe / Size	Art. Nr. / Article no.
1	AR-1000039



Größe / Size	Art. Nr. / Article no.
2	AR-1000040

Schnellkupplungspaar
Fast coupling pair



Größe / Size	Art. Nr. / Article no.
1	AR-1002851



Größe / Size	Art. Nr. / Article no.
2	AR-1002852

Weiteres Zubehör
für diverse Kupplungen

Further accessories
for different couplings



Einmaulschlüssel DIN 894 Single open-end wrench	Art. Nr. Article no.	Flache Mutter VA Flat nut VA	Art. Nr. Article no.
SW10 für M6	390 308	M6	AR-1004454
SW13 für M8	390 311	M8	AR-1004455
SW17 für M10	390 314	M10	AR-1004456

Montage der Schnellkupplungen an die passende Reinigungswelle

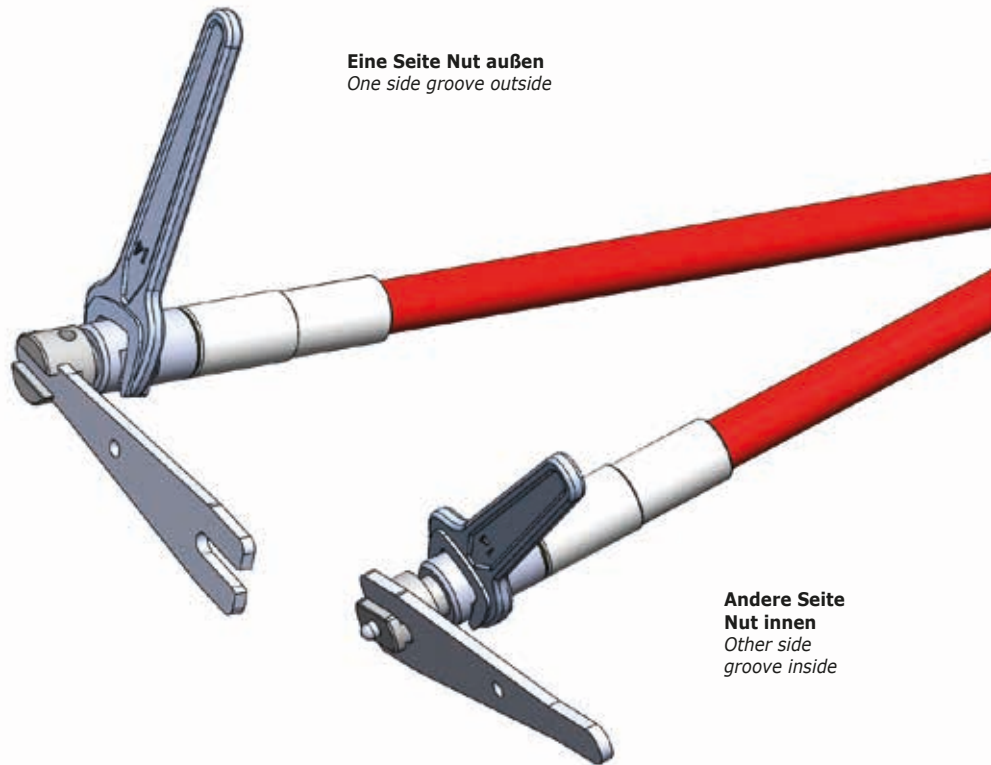
Assembly of the fast couplings to the appropriate cleaning shaft

Einmaulschlüssel/Single open-end wrench

Gr. 1 (SW14) - Art. Nr.: 390 312
Gr. 2 (SW18) - Art. Nr.: 390 315

Montageschlüssel/Assembly key

Gr. 1 - Art. Nr.: AR-1002299
Gr. 2 - Art. Nr.: AR-1002300



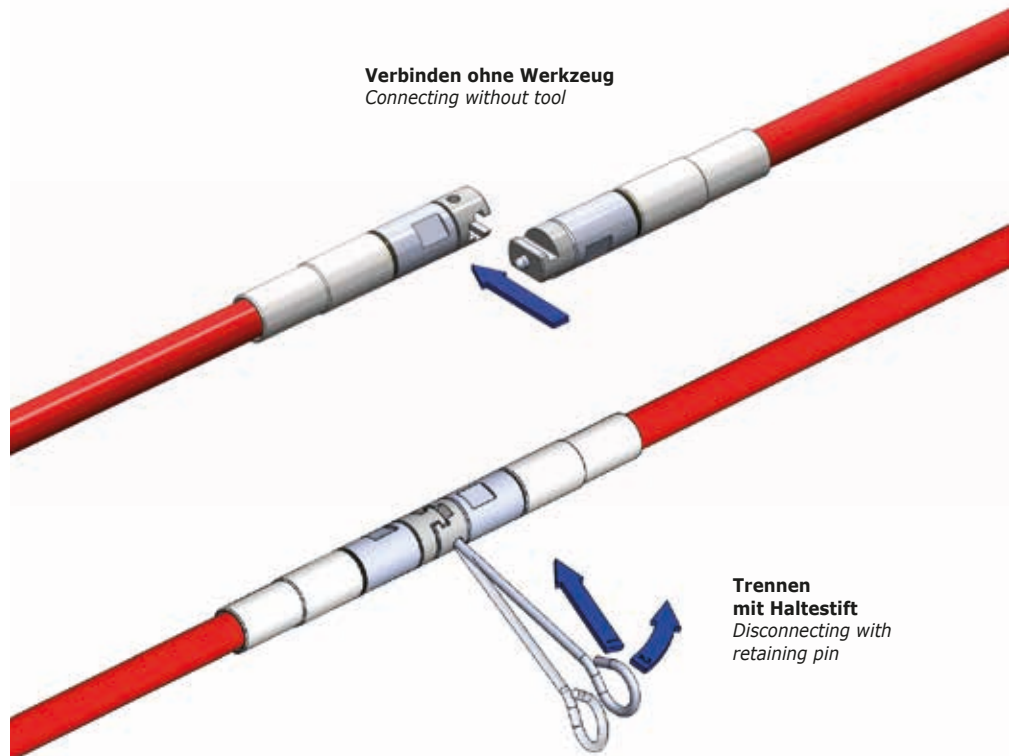
Eine Seite Nut außen
One side groove outside

Andere Seite Nut innen
Other side groove inside

Schnelles Kuppeln und Trennen der Reinigungswellen untereinander

Fast coupling and disconnecting of the cleaning shafts among each other

Haltestift/Retaining pin
Art. Nr.: AR-1002853



Verbinden ohne Werkzeug
Connecting without tool

Trennen mit Haltestift
Disconnecting with retaining pin